



## CARATTERISTICHE TECNICHE TECHNICAL FEATURES

MATERIALI IMPIEGATI / RAW MATERIALS	PP + anti-UV
PRESSIONE DI ESERCIZIO / WORKING PRESSURE	MAX 10 bar - 20°C
TEMPERATURA MAX / MAXIMUM TEMPERATURE	80°C
FILETTATURE / THREAD	UNI EN 10226-1 (ex UNI ISO 7/1)

I dati del presente catalogo, hanno titolo puramente indicativo e non sono vincolanti. La Plast Project S.r.l. si riserva il diritto, anche senza preavviso, di effettuare modifiche ai prodotti, ai fini del loro miglioramento tecnico.

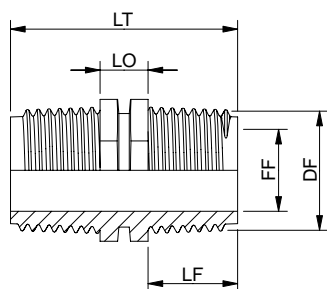
*The specifications in this document are to be considered merely informative and are not binding. Plast Project S.r.l. reserves its right to carry out all the modifications which are considered necessary in accordance with technical improvement.*

# Raccorderia filettata in polipropilene PN10

PN10 PP threaded fittings

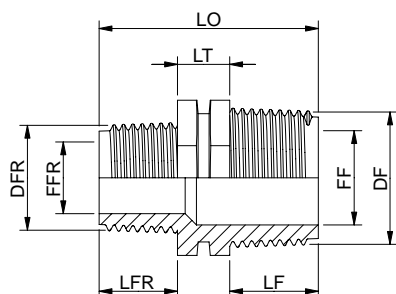


## 7510



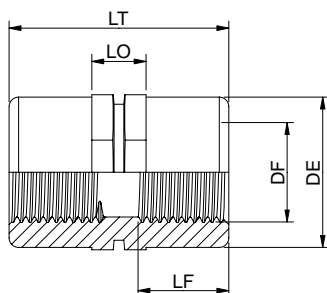
CODE	Ø	LT	FF	DF	LF	LO
7510.000C	½"	38.8	14.0	½"	15.3	8.0
7510.000D	¾"	44.6	18.3	¾"	17.3	10.0
7510.000E	1"	49.7	24.3	1"	19.2	11.3
7510.000F	1"¼	56.0	31.8	1"¼	22.0	12.0
7510.000G	1"½	61.0	37.7	1"½	24.0	13.0
7510.000H	2"	69.0	48.7	2"	27.0	15.0
7510.000I	2"½					
7510.000L	3"					

## 7515



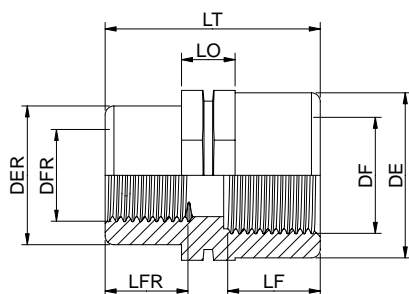
CODE	Ø	LT	FF	DF	LF	FFR	DFR	LFR	LO
7515.00DC	¾"-½"	42.6	18.3	¾"	17.3	14.0	½"	15.3	10.0
7515.00EC	1"-½"								
7515.00ED	1"-¾"	47.8	24.3	1"	19.2	18.3	¾"	17.3	11.3
7515.00FD	1"¼-¾"	51.3	31.8	1"¼	22.0	18.3	¾"	17.3	12.0
7515.00FE	1"¼-1"	53.2	31.8	1"¼	22.0	24.3	1"	19.2	12.0
7515.00GF	1"½-1"¼	59.0	37.7	1"½	24.0	31.8	1"¼	22.0	13.0
7515.00HF	2"-1"¼	64.0	48.7	2"	27.0	31.8	1"¼	22.0	15.0
7515.00HG	2"-1"½	66.0	48.7	2"	27.0	37.7	1"½	24.0	15.0
7515.00IH	2"½-2"								
7515.00LH	3"-2"								
7515.00LI	3"-2"½								

## 7520



CODE	Ø	LT	DF	DE	LF	LO
7520.000C	½"	45.2	½"	31.3	18.0	11.2
7520.000D	¾"	50.0	¾"	37.2	20.0	12.0
7520.000E	1"	58.0	1"	44.9	22.0	12.0
7520.000F	1"¼	53.8	1"¼	54.5	24.0	10.0
7520.000G	1"½	59.6	1"½	60.6	26.0	10.0
7520.000H	2"	64.4	2"	74.3	28.0	10.0

## 7525



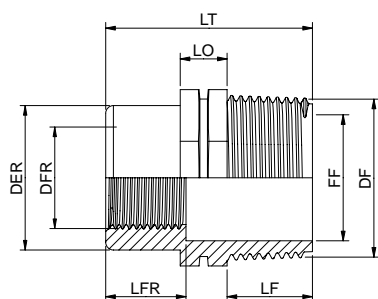
CODE	Ø	LT	DF	DE	LF	DFR	DER	LFR	LO
7525.00DC	¾"-½"	48.0	¾"	37.2	20.0	½"	31.3	18.0	12.0
7525.00EC	1"-½"	52.2	1"	44.9	22.0	½"	31.3	18.0	12.0
7525.00ED	1"-¾"	53.8	1"	44.9	22.0	¾"	37.2	20.0	12.0
7525.00FE	1"¼-1"	51.6	1"¼	54.5	24.0	1"	44.9	22.0	10.0
7525.00GE	1"½-1"	54.0	1"½	60.6	26.0	1"	44.9	22.0	10.0
7525.00GF	1"½-1"¼	56.6	1"½	60.6	26.0	1"¼	54.5	24.0	10.0
7525.00HE	2"-1"	56.6	2"	74.3	28.0	1"	44.9	22.0	10.0
7525.00HF	2"-1"¼	58.8	2"	74.3	28.0	1"¼	54.5	24.0	10.0
7525.00HG	2"-1"½	61.6	2"	74.3	28.0	1"½	60.6	26.0	10.0

# Raccorderia filettata in polipropilene PN10

PN10 PP threaded fittings

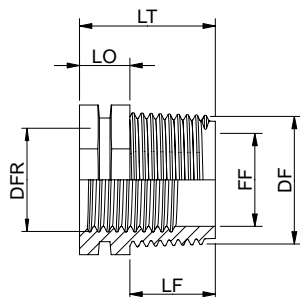


## 7530



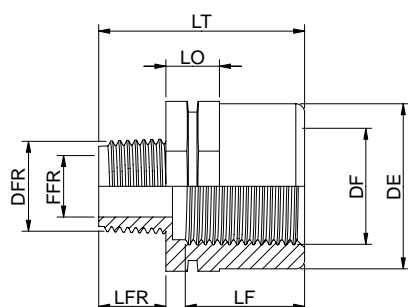
CODE	Ø	LT	FF	DF	LF	DFR	DER	LFR	LO
7530.00DC	¾"-½"	45.2	18.3	¾"	17.3	½"	31.3	18.0	11.2
7530.00ED	1"-¾"	51.0	24.3	1"	19.2	¾"	37.2	20.0	12.0
7530.00FC	1"¼-½"	51.0	31.8	1"¼"	22.0	½"	31.3	18.0	12.0
7530.00FD	1"¼-¾"	52.8	31.8	1"¼"	22.0	¾"	37.2	20.0	12.0
7530.00FE	1"½-1"	57.2	31.8	1"½"	22.0	1"	44.9	22.0	12.0
7530.00GE	1"½-1"	56.8	37.7	1"½"	24.0	1"	44.9	22.0	13.0
7530.00GF	1"½-1"¼"	59.6	37.7	1"½"	24.0	1"¼"	54.5	24.0	13.0
7530.00HE	2"-1"	61.6	48.7	2"	27.0	1"	44.9	22.0	15.0
7530.00HF	2"-1"¼"	63.4	48.7	2"	27.0	1"¼"	54.5	24.5	15.0
7530.00HG	2"-1"½"	65.6	48.7	2"	27.0	1"½"	60.6	26.0	15.0

## 7535



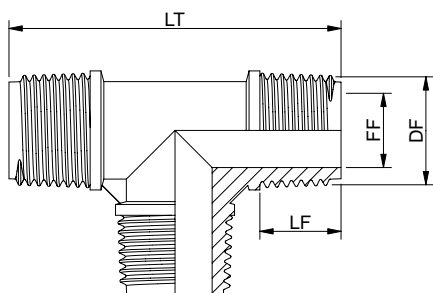
CODE	Ø	LT	FF	DF	LF	DFR	LO
7535.00DC	¾"-½"	28.0	13.7	¾"	18.0	½"	10.0
7535.00EC	1"-½"	30.5	13.7	1"	19.2	½"	11.3
7535.00ED	1"-¾"	30.5	18.0	1"	19.2	¾"	11.3
7535.00FC	1"¼-½"	34.0	13.7	1"¼"	22.0	½"	12.0
7535.00FD	1"¼-¾"	34.0	18.0	1"¼"	22.0	¾"	12.0
7535.00FE	1"¼-1"	34.0	24.0	1"¼"	22.0	1"	12.0
7535.00GC	1"½-½"	36.9	15.7	1"½"	23.9	½"	13.0
7535.00GD	1"½-¾"	36.9	18.0	1"½"	23.9	¾"	13.0
7535.00GE	1"½-1"	36.9	24.0	1"½"	23.9	1"	13.0
7535.00GF	1"½-1"¼"	36.9	32.1	1"½"	23.9	1"¼"	13.0
7535.00HC	2"-½"	43.0	15.7	2"	27.0	½"	15.0
7535.00HD	2"-¾"	43.0	18.0	2"	27.0	¾"	15.0
7535.00HE	2"-1"	43.0	24.0	2"	27.0	1"	15.0
7535.00HF	2"-1"¼"	43.0	32.1	2"	27.0	1"¼"	15.0
7535.00HG	2"-1"½"	43.0	38.0	2"	27.0	1"½"	15.0
7535.00IH	2"½-2"						
7535.00LE	3"-1"						
7535.00LF	3"-1"¼"						
7535.00LG	3"-1"½"						
7535.00LH	3"-2"						
7535.00LI	3"-2"½"						
7535.00NH	4"-2"						
7535.00NL	4"-3"						

## 7540



CODE	Ø	LT	DF	DE	LF	FFR	DFR	LFR	LO
7540.00CD	½"-¾"								
7540.00CE	½"-1"								
7540.00CF	½"-1"¼"								
7540.00CG	½"-1"½"								
7540.00DE	¾"-1"	52.2	1"	44.9	22.0	18.3	¾"	17.3	12.0
7540.00DF	¾"-1"¼"								
7540.00DG	¾"-1"½"								
7540.00DH	¾"-2"								
7540.00EF	1"-1"¼"								
7540.00EG	1"-1"½"								
7540.00EH	1"-2"								
7540.00FG	1"¼-1"½"	56.8	1"½"	60.6	26.0	31.8	1"¼"	22.0	10.0
7540.00FH	1"¼-2"								
7540.00GH	1"½-2"	58.4	2"	74.3	28.0	37.7	1"½"	24.0	10.0

## 7610



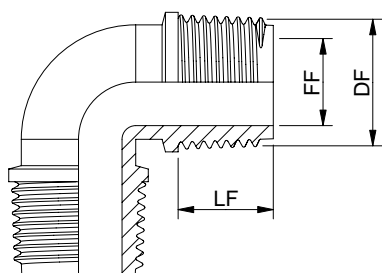
CODE	Ø	LT	FF	DF	LF
7610.000C	½"	62.0	14.0	½"	15.3
7610.000D	¾"	71.0	18.3	¾"	17.3
7610.000E	1"	93.3	24.3	1"	19.2
7610.000F	1"¼"	102.0	31.8	1"¼"	22.0

# Raccorderia filettata in polipropilene PN10

PN10 PP threaded fittings

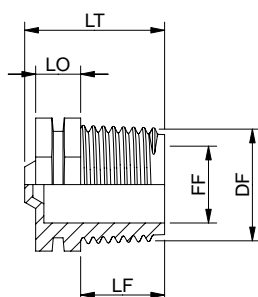


## 7710



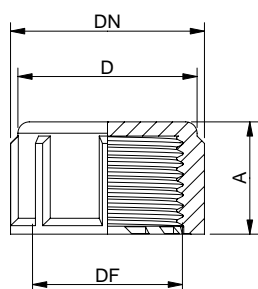
CODE	Ø	FF	DF	LF
7710.000C	½"	14.0	½"	15.3
7710.000D	¾"	18.3	¾"	17.3
7710.000E	1"	24.3	1"	19.2
7710.000F	1¼"			
7710.000G	1½"			

## 7810



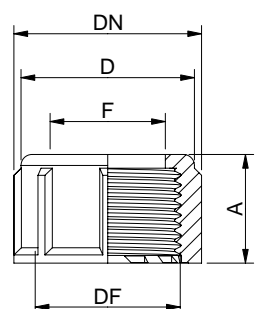
CODE	Ø	LT	FF	DF	LF	LO
7810.000C	½"	25.4	14.0	½"	15.3	8.0
7810.000D	¾"	29.4	18.3	¾"	17.3	10.0
7810.000E	1"	33.0	24.3	1"	19.2	11.3
7810.000F	1¼"	36.5	31.8	1¼"	22.0	12.0
7810.000G	1½"	42.0	37.7	1½"	24.0	13.0
7810.000H	2"	47.0	48.7	2"	27.0	15.0

## 7920



CODE	Ø	DN	D	DF	A
7920.000C	½"	27.5	25.0	½"	17.0
7920.000D	¾"	33.5	31.0	¾"	19.5
7920.000E	1"	41.2	38.2	1"	21.5
7920.000F	1¼"	51.0	48.0	1¼"	25.2
7920.000G	1½"	57.5	54.5	1½"	27.7
7920.000H	2"	69.5	66.5	2"	40.0

## 7925



CODE	Ø	DN	D	F	DF	A
7925.000C	½"	27.5	25.0	16.2	½"	17.0
7925.000D	¾"	33.5	31.0	20.5	¾"	19.5