

Valvole a cilindro "Jolly"

2 o-rings, foro di passaggio Ø9 mm

"Jolly" cylinder valves
2 o-rings, Ø9 mm passage hole



CARATTERISTICHE TECNICHE TECHNICAL FEATURES

MATERIALI IMPIEGATI / RAW MATERIALS	PP + anti-UV NBR (O-ring)
PRESSIONE DI ESERCIZIO / WORKING PRESSURE	MAX 6 bar - 20°C
TEMPERATURA MAX / MAXIMUM TEMPERATURE	80°C
FILETTATURE / THREAD	BSPT / NPT / HT

DESCRIZIONE:

Valvola supercompatta a cilindro plurimpiego di tipo economico, composta da 2 pezzi e 2 guarnizioni OR. Anche se di dimensioni contenute, mantiene tuttavia un foro di passaggio di 9 mm, che gli fa garantire minime perdite di carico, nei punti dell'impianto ove essa viene installata.

APPLICAZIONI:

Grande versatilità, soprattutto nelle ali irrigue secondarie di breve e media lunghezza, o nelle ali gocciolanti. Particolarmente indicata in impianti irrigui con fertirrigazione.

MATERIALI IMPIEGATI:

Valvola interamente realizzata in polipropilene nero, rinforzato con fibre vetro, e stabilizzato anti UV. Guarnizioni OR in NBR (gomma nitrilica), resistente alle benzine, agli oli, ai grassi vegetali ed animali, a molti solventi, ed agli agenti chimici presenti in fertirrigazione.

CARATTERISTICHE TECNICHE:

- ▶ Costruzione semplificata composta da soli 2 pezzi con sistema di assemblaggio a scatto
- ▶ Tenuta idraulica affidata a 2 guarnizioni OR di ampia sezione (2.62 mm)
- ▶ Apertura e chiusura della valvola con particolare fluidità
- ▶ Possibilità di installazione bidirezionale grazie al manettino di apertura/chiusura di forma simmetrica
- ▶ Manettino colorato per rendere la valvola facilmente individuabile nell'impianto
- ▶ Passaggio interno sul corpo valvola Ø9 mm
- ▶ Infinita gamma di versioni disponibili, per soddisfare le più diverse tipologie di applicazione
- ▶ Attacchi filettati BSPT / NPT / HT
- ▶ Pressione di esercizio massima consigliata: 6 bar, a 20°C

DESCRIPTION:

Inexpensive multiple-purpose, super compact cylinder valve, formed by 2 pieces and 2 O-rings. Though small in size, it features a 9 mm passage hole that guarantees minimum load loss in the parts of the system where it is installed.

APPLICATIONS:

Extremely versatile, especially in short and medium-length secondary irrigation wings, or in driplines. Especially suitable in fertigation systems.

RAW MATERIALS:

Valve made entirely with anti-UV stabilised, black polypropylene, reinforced with fibreglass. O-rings in NBR (nitrilic rubber), resistant to petrol, oils, vegetable and animal fats, many solvents and chemical agents present in fertigation.

SPECIFICATIONS:

- ▶ *Simplified construction formed by only 2 pieces with release assembling system*
- ▶ *Watertightness ensured by 2 wide-section O-rings (2.62 mm)*
- ▶ *Particularly smooth opening and closing of valve*
- ▶ *Possibility of bi-directional installation thanks to the opening/closing symmetric-shaped throttle*
- ▶ *Brightly coloured throttle so the valve is easy to find in the system*
- ▶ *Ø9 mm internal passage on the valve body*
- ▶ *Wide range of versions available, to satisfy various kinds of applications*
- ▶ *Thread: BSPT / NPT / HT*
- ▶ *Maximum suggested working pressure: 6 bar at 20°C*

I dati del presente catalogo, hanno titolo puramente indicativo e non sono vincolanti. La Plast Project S.r.l. si riserva il diritto, anche senza preavviso, di effettuare modifiche ai prodotti, ai fini del loro miglioramento tecnico.

The specifications in this document are to be considered merely informative and are not binding. Plast Project S.r.l. reserves its right to carry out all the modifications which are considered necessary in accordance with technical improvement.

Valvole a cilindro "Jolly"

2 o-rings, foro di passaggio Ø9 mm

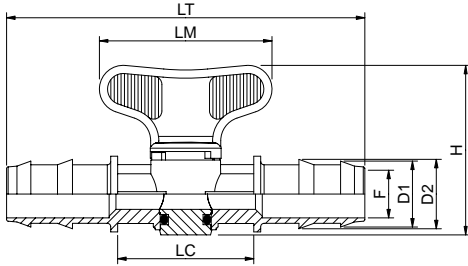
"Jolly" cylinder valves

2 o-rings, Ø9 mm passage hole



3910

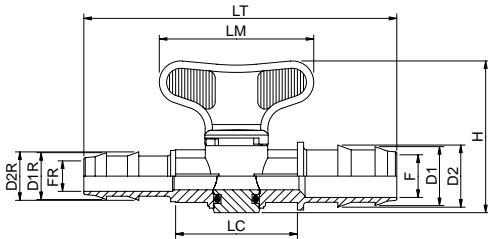
CODE	Ø	LT	F	D1	D2
3910.0160	16-16	99.2	9.8	14.8	15.6
3910.0200	20-20	99.8	13.9	19.0	20.0
3910.0250	25-25	114.0	18.2	24.0	25.0



LM	LC	H
49.6	40.0	49.0

3915

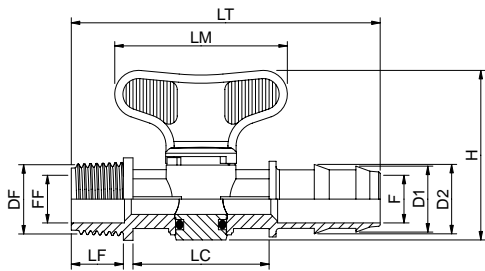
CODE	Ø	LT	F	D1	D2	FR	D1R	D2R
3915.2016	20-16	99.5	13.9	19.0	20.0	9.8	14.8	15.6
3915.2516	25-16	106.2	18.2	24.0	25.0	9.8	14.8	15.6
3915.2520	25-20	106.9	18.2	24.0	25.0	13.9	19.0	20.0



LM	LC	H
49.6	40.0	49.0

3920

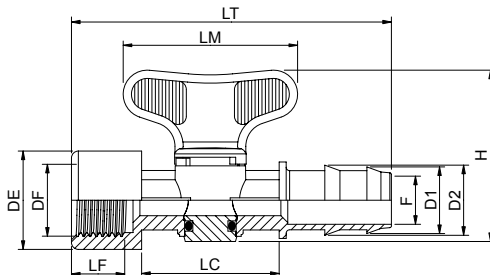
CODE	Ø	LT	F	D1	D2	LF	FF	DF
3920.016C	16-½"	87.3	9.8	14.8	15.6	15.3	14.0	½"
3920.016D	16-¾"	89.3	9.8	14.8	15.6	17.3	18.3	¾"
3920.020C	20-½"	87.6	13.9	19.0	20.0	15.3	14.0	½"
3920.020D	20-¾"	89.6	13.9	19.0	20.0	17.3	18.3	¾"
3920.025C	25-½"	94.6	18.2	24.0	25.0	15.3	14.0	½"
3920.025D	25-¾"	96.6	18.2	24.0	25.0	17.3	18.3	¾"



LM	LC	H
49.6	40.0	49.0

3925

CODE	Ø	LT	F	D1	D2	LF	DF	DE
3925.016C	16-½"	89.6	9.8	14.8	15.6	18.0	½"	31.3
3925.016D	16-¾"	91.2	9.8	14.8	15.6	20.0	¾"	37.2
3925.020C	20-½"	89.9	13.9	19.0	20.0	18.0	½"	31.3
3925.020D	20-¾"	91.5	13.9	19.0	20.0	20.0	¾"	37.2
3925.025C	25-½"	97.0	18.2	24.0	25.0	18.0	½"	31.3
3925.025D	25-¾"	98.6	18.2	24.0	25.0	20.0	¾"	37.2



LM	LC	H
49.6	40.0	49.0

Valvole a cilindro "Jolly"

2 o-rings, foro di passaggio Ø9 mm

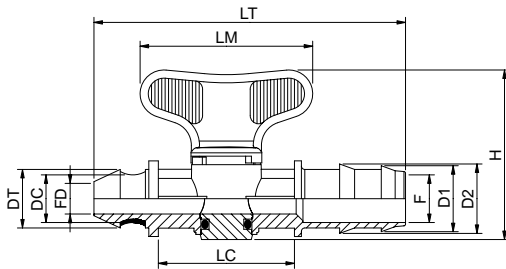
"Jolly" cylinder valves

2 o-rings, Ø9 mm passage hole



3935

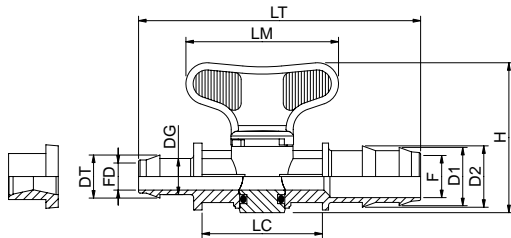
CODE	Ø	LT	F	D1	D2	FD	DC	DT
3935.0160	16-D	88.1	9.8	14.8	15.6	8.9	14.0	16.8
3935.0200	20-D	88.4	13.9	19.0	20.0	8.9	14.0	16.8
3935.0250	25-D	95.5	18.2	24.0	25.0	8.9	14.0	16.8



LM	LC	H
49.6	40.0	49.0

3944

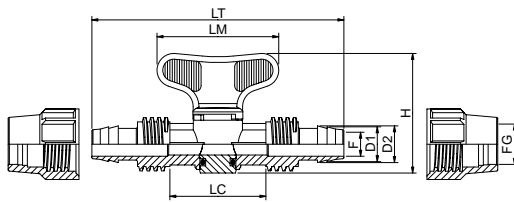
CODE	Ø	LT	F	D1	D2	DG	FD	DT
3944.0160	16-D	90.3	9.8	14.8	15.6	11.8	8.9	14.0
3944.0200	20-D	90.6	13.9	19.0	20.0	11.8	8.9	14.0
3944.0250	25-D	97.8	18.2	24.0	25.0	11.8	8.9	14.0



LM	LC	H
49.6	40.0	49.0

3960

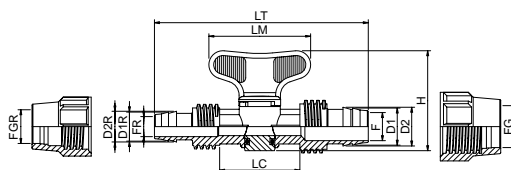
CODE	Ø	LT	F	D1	D2	FG
3960.0160	16-16	104.3	10.0	14.2	15.0	16.7
3960.0200	20-20	107.7	14.0	18.3	19.1	20.7
3960.0250	25-25	112.0	18.3	23.1	23.9	25.7



LM	LC	H
49.6	40.0	49.0

3965

CODE	Ø	LT	F	D1	D2	FG	FR	D1R	D2R	FGR
3965.2016	20-16	106.0	14.0	18.3	19.1	20.7	10.0	14.2	15.0	16.7
3965.2516	25-16	108.2	18.3	23.1	23.9	25.7	10.0	14.2	15.0	16.7
3965.2520	25-20	109.9	18.3	23.1	23.9	25.7	14.0	18.3	19.1	20.7



LM	LC	H
49.6	40.0	49.0

Valvole a cilindro "Jolly"

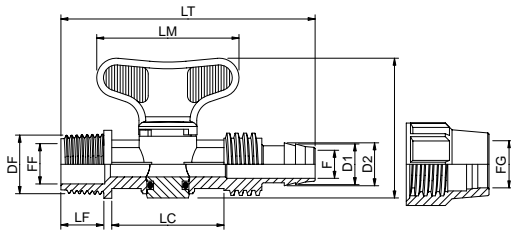
2 o-rings, foro di passaggio Ø9 mm

"Jolly" cylinder valves

2 o-rings, Ø9 mm passage hole



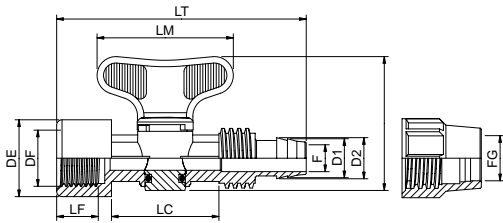
3970



CODE	Ø	LT	F	D1	D2	FG	LF	FF	DF
3970.016C	16-1/2"	89.9	10.0	14.2	15.0	16.7	15.3	14.0	1/2"
3970.016D	16-3/4"	91.9	10.0	14.2	15.0	16.7	17.3	18.3	3/4"
3970.020C	20-1/2"	91.5	14.0	18.3	19.1	20.7	15.3	14.0	1/2"
3970.020D	20-3/4"	93.5	14.0	18.3	19.1	20.7	17.3	18.3	3/4"
3970.025C	25-1/2"	93.7	18.3	23.1	23.9	25.7	15.3	14.0	1/2"
3970.025D	25-3/4"	95.7	18.3	23.1	23.9	25.7	17.3	18.3	3/4"

LM	LC	H
49.6	40.0	49.0

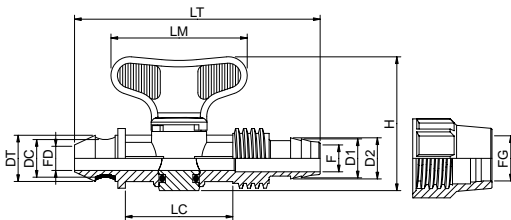
3975



CODE	Ø	LT	F	D1	D2	FG	LF	DF	DE
3975.016C	16-1/2"	92.2	10.0	14.2	15.0	16.7	18.0	1/2"	31.3
3975.016D	16-3/4"	93.8	10.0	14.2	15.0	16.7	20.0	3/4"	37.2
3975.020C	20-1/2"	93.8	14.0	18.3	19.1	20.7	18.0	1/2"	31.3
3975.020D	20-3/4"	95.4	14.0	18.3	19.1	20.7	20.0	3/4"	37.2
3975.025C	25-1/2"	96.0	18.3	23.1	23.9	25.7	18.0	1/2"	31.3
3975.025D	25-3/4"	97.6	18.3	23.1	23.9	25.7	20.0	3/4"	37.2

LM	LC	H
49.6	40.0	49.0

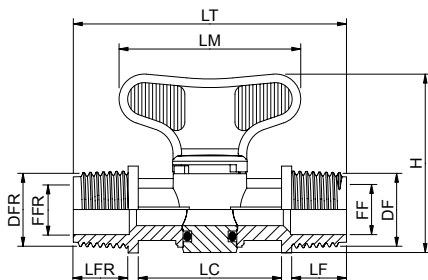
3985



CODE	Ø	LT	F	D1	D2	FG	FD	DC	DT
3985.0160	16-D	90.6	10.0	14.2	15.0	16.7	8.9	14.0	16.8
3985.0200	20-D	92.3	14.0	18.3	19.1	20.7	8.9	14.0	16.8
3985.0250	25-D	94.5	18.3	23.1	23.9	25.7	8.9	14.0	16.8

LM	LC	H
49.6	40.0	49.0

4010



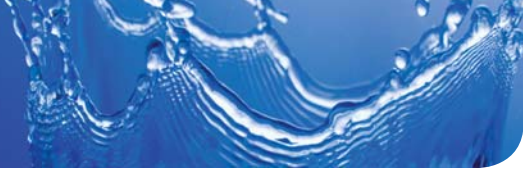
CODE	Ø	LT	LF	FF	DF	LFR	FFR	DFR
4010.000C	1/2"-1/2"	75.4	15.3	14.0	1/2"			
4010.000C	3/4"-3/4"	79.4	17.3	18.3	3/4"			
4010.00DC	3/4"-1/2"	77.4	17.3	18.3	3/4"	15.3	14.0	1/2"

LM	LC	H
49.6	40.0	49.0

Valvole a cilindro "Jolly"

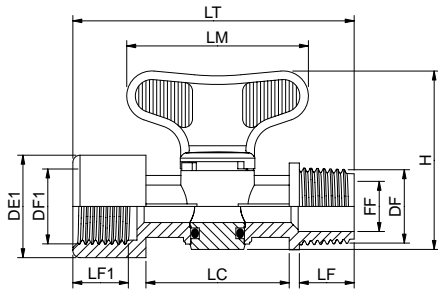
2 o-rings, foro di passaggio Ø9 mm

"Jolly" cylinder valves
2 o-rings, Ø9 mm passage hole



4015

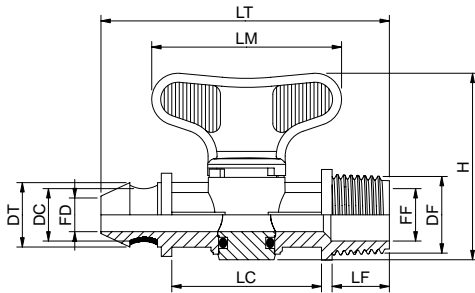
CODE	Ø	LT	LF	FF	DF	LF1	DF1	DE1
4015.000C	1/2"-1/2"	77.7	15.3	14.0	1/2"	18.0	1/2"	31.3
4015.000D	3/4"-3/4"	81.2	17.3	18.3	3/4"	20.0	3/4"	37.2
4015.00DC	3/4"-1/2"	79.7	17.3	18.3	3/4"	18.0	1/2"	31.3



LM	LC	H
49.6	40.0	49.0

4035

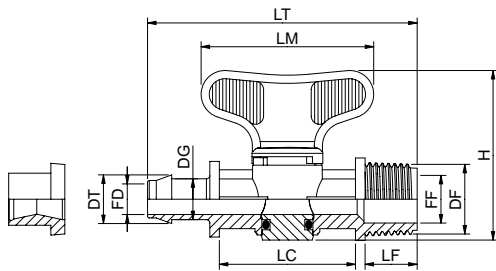
CODE	Ø	LT	LF	FF	DF	FD	DC	DT
4035.000C	1/2"-D	76.2	15.3	14.0	1/2"	8.9	14.0	16.8
4035.000D	3/4"-D	78.2	17.3	18.3	3/4"	8.9	14.0	16.8



LM	LC	H
49.6	40.0	49.0

4044

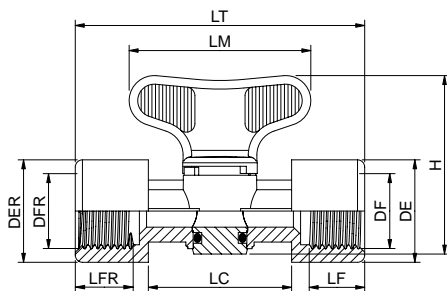
CODE	Ø	LT	LF	FF	DF	DG	FD	DT
4044.000C	1/2"-D	78.4	15.3	14.0	1/2"	11.8	8.9	14.0
4044.000D	3/4"-D	80.4	17.3	18.3	3/4"	11.8	8.9	14.0



LM	LC	H
49.6	40.0	49.0

4060

CODE	Ø	LT	LF	DF	DE	LFR	DFR	DER
4060.000C	1/2"-1/2"	80.0	18.0	1/2"	31.3			
4060.000D	3/4"-3/4"	83.2	20.0	3/4"	37.2			
4060.00DC	3/4"-1/2"	81.6	20.0	3/4"	37.2	18.0	1/2"	31.3



LM	LC	H
49.6	40.0	49.0

Valvole a cilindro "Jolly"

2 o-rings, foro di passaggio Ø9 mm

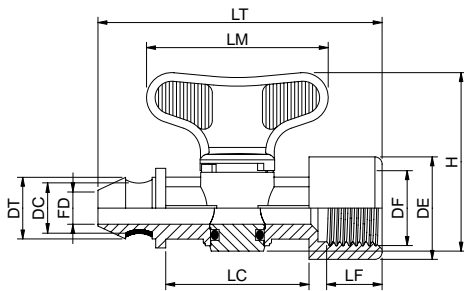
"Jolly" cylinder valves

2 o-rings, Ø9 mm passage hole



4085

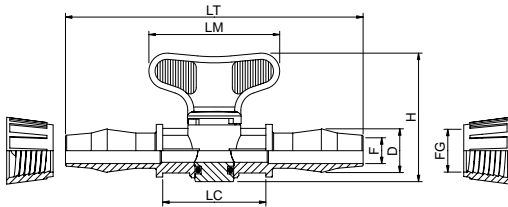
CODE	Ø	LT	LF	DF	DE	FD	DC	DT
4085.000C	½"-D	78.5	18.0	½"	31.3	8.9	14.0	16.8
4085.000D	¾"-D	80.0	20.0	¾"	37.2	8.9	14.0	16.8



LM	LC	H
49.6	40.0	49.0

4110

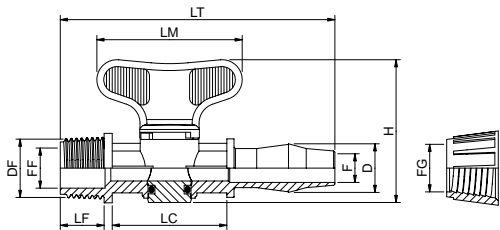
CODE	Ø	LT	F	D	FG
4110.0160	16-16	114.2	10.0	16.7	16.4



LM	LC	H
49.6	40.0	49.0

4120

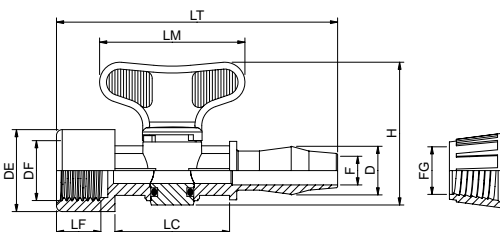
CODE	Ø	LT	F	D	FG	LF	FF	DF
4120.016C	16-½"	94.8	10.0	16.7	16.4	15.3	14.0	½"
4120.016D	16-¾"	96.8	10.0	16.7	16.4	17.3	18.3	¾"



LM	LC	H
49.6	40.0	49.0

4125

CODE	Ø	LT	F	D	FG	LF	DF	DE
4125.016C	16-½"	97.1	10.0	16.7	16.4	18.0	½"	31.3
4125.016D	16-¾"	98.7	10.0	16.7	16.4	20.0	¾"	37.2



LM	LC	H
49.6	40.0	49.0

Valvole a cilindro "Jolly"

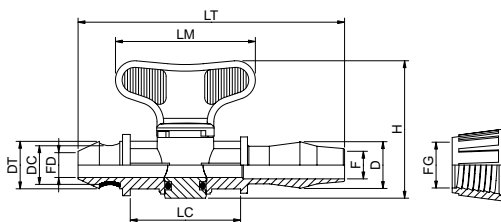
2 o-rings, foro di passaggio Ø9 mm

"Jolly" cylinder valves
2 o-rings, Ø9 mm passage hole



4135

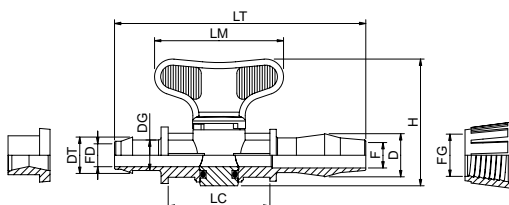
CODE	Ø	LT	F	D	FG	FD	DC	DT
4135.0160	16-D	95.6	10.0	16.7	16.4	8.9	14.0	16.8



LM	LC	H
49.6	40.0	49.0

4144

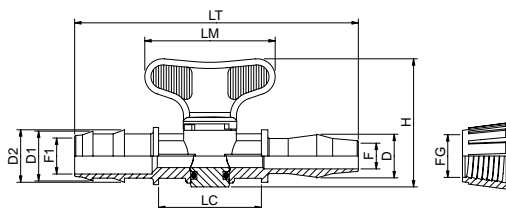
CODE	Ø	LT	F	D	FG	DG	FD	DT
4144.0160	16-D	97.8	10.0	16.7	16.4	11.8	8.9	14.0



LM	LC	H
49.6	40.0	49.0

4148

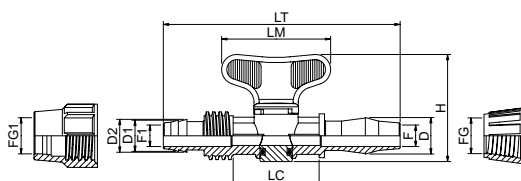
CODE	Ø	LT	F	D	FG	F1	D1	D2
4148-1616	16-16	106.7	10.0	16.7	16.4	9.8	14.8	15.6
4148-2016	20-16	107.0	10.0	16.7	16.4	13.9	19.0	20.0
4148-2516	25-16	114.1	10.0	16.7	16.4	18.2	24.0	25.0



LM	LC	H
49.6	40.0	49.0

4149

CODE	Ø	LT	F	D	FG	F1	D1	D2	FG1
4149-1616	16-16	109.3	10.0	16.7	16.4	10.0	14.2	15.0	16.7
4149-2016	20-16	110.9	10.0	16.7	16.4	14.0	18.3	19.1	20.7
4149-2516	25-16	113.1	10.0	16.7	16.4	18.3	23.1	23.9	25.7



LM	LC	H
49.6	40.0	49.0

Valvole a cilindro "Jolly"

2 o-rings, foro di passaggio Ø9 mm

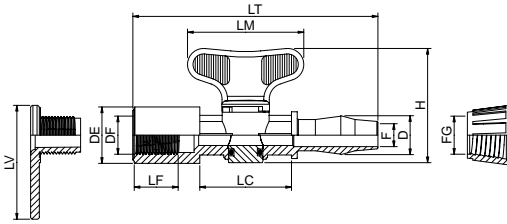
"Jolly" cylinder valves

2 o-rings, Ø9 mm passage hole



4150

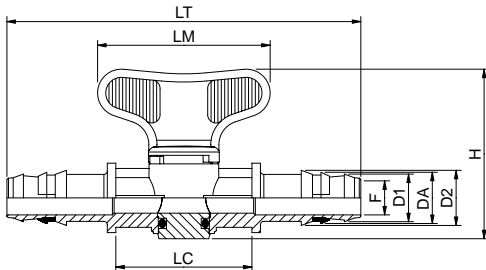
CODE	Ø	LT	F	D	FG	LF	DF	DE	LV
4150.0160	16-D	105.5	10.0	16.7	16.4	20.0	3/8"	24.3	49.6



LM	LC	H
49.6	40.0	49.0

4160

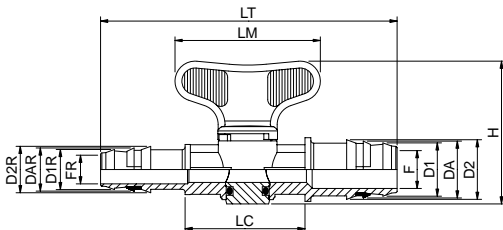
CODE	Ø	LT	F	D1	DA	D2
4160.0160	16-16	101.6	9.8	13.8	15.2	15.8
4160.0200	20-20	104.2	13.9	18.2	19.6	20.2



LM	LC	H
49.6	40.0	49.0

4165

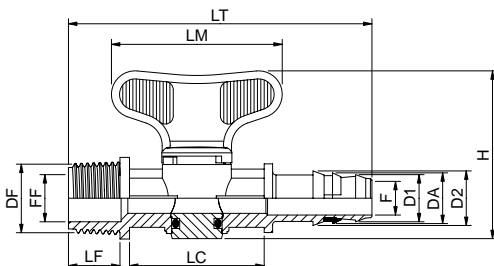
CODE	Ø	LT	F	D1	DA	D2	FR	D1R	DAR	D2R
4165.2016	20-16	102.9	13.9	18.2	19.6	20.2	9.8	13.8	15.2	15.8



LM	LC	H
49.6	40.0	49.0

4170

CODE	Ø	LT	F	D1	DA	D2	LF	FF	DF
4170.016C	16-1/2"	88.5	9.8	13.8	15.2	15.8	15.3	14.0	1/2"
4170.016D	16-3/4"	90.5	9.8	13.8	15.2	15.8	17.3	18.3	3/4"
4170.020C	20-1/2"	89.8	13.9	18.2	19.6	20.2	15.3	14.0	1/2"
4170.020D	20-3/4"	91.8	13.9	18.2	19.6	20.2	17.3	18.3	3/4"



LM	LC	H
49.6	40.0	49.0

Valvole a cilindro "Jolly"

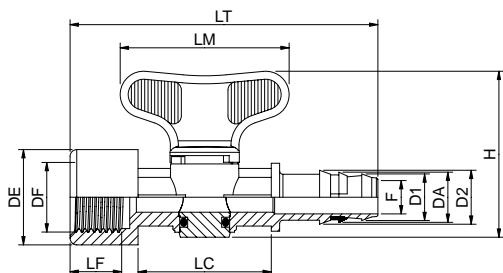
2 o-rings, foro di passaggio Ø9 mm

"Jolly" cylinder valves

2 o-rings, Ø9 mm passage hole



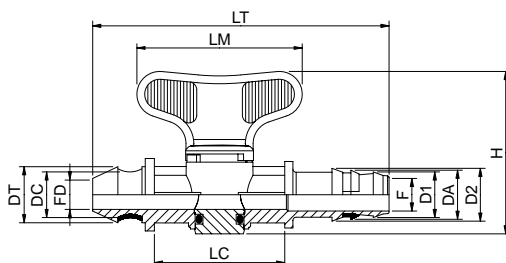
4175



CODE	Ø	LT	F	D1	DA	D2	LF	DF	DE
4175.016C	16-1/2"	88.5	9.8	13.8	15.2	15.8	18.0	1/2"	31.3
4175.016D	16-3/4"	90.5	9.8	13.8	15.2	15.8	20.0	3/4"	37.2
4175.020C	20-1/2"	89.8	13.9	18.2	19.6	20.2	18.0	1/2"	31.3
4175.020D	20-3/4"	91.8	13.9	18.2	19.6	20.2	20.0	3/4"	37.2

LM	LC	H
49.6	40.0	49.0

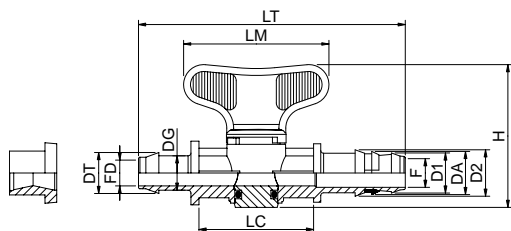
4185



CODE	Ø	LT	F	D1	DA	D2	FD	DC	DT
4185.0160	16-D	89.3	9.8	13.8	15.2	15.8	8.9	14.0	16.8
4185.0200	20-D	90.6	13.9	18.2	19.6	20.2	8.9	14.0	16.8

LM	LC	H
49.6	40.0	49.0

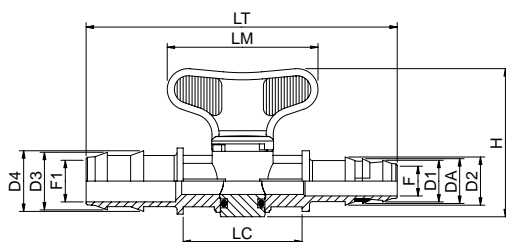
4194



CODE	Ø	LT	F	D1	DA	D2	DG	FD	DT
4194.0160	16-D	91.5	9.8	13.8	15.2	15.8	11.8	8.9	14.0
4194.0200	20-D	92.8	13.9	18.2	19.6	20.2	11.8	8.9	14.0

LM	LC	H
49.6	40.0	49.0

4198



CODE	Ø	LT	F	D1	DA	D2	F1	D3	D4
4198-1616	16-16	100.4	9.8	13.8	15.2	15.8	9.8	14.8	15.6
4198-1620	16-20	101.7	13.9	18.2	19.6	20.2	9.8	14.8	15.6
4198-2016	20-16	100.7	9.8	13.8	15.2	15.8	13.9	19.0	20.0
4198-2020	20-20	102.0	13.9	18.2	19.6	20.2	13.9	19.0	20.0
4198-2516	25-16	107.8	9.8	13.8	15.2	15.8	18.2	24.0	25.0
4198-2520	25-20	109.1	13.9	18.2	19.6	20.2	18.2	24.0	25.0

LM	LC	H
49.6	40.0	49.0

Valvole a cilindro "Jolly"

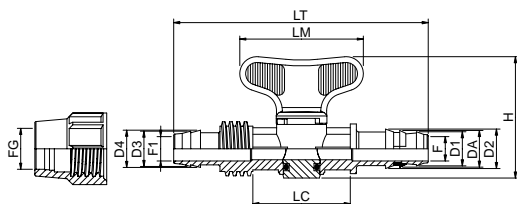
2 o-rings, foro di passaggio Ø9 mm

"Jolly" cylinder valves

2 o-rings, Ø9 mm passage hole



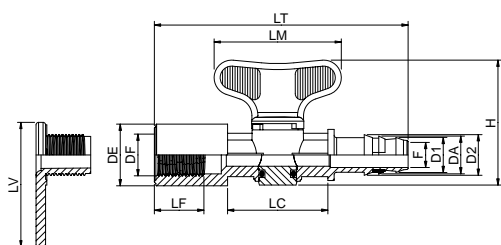
4199



CODE	Ø	LT	F	D1	DA	D2	F1	D3	D4	FG
4199-1616	16-16	103.0	9.8	13.8	15.2	15.8	10.0	14.2	15.0	16.7
4199-1620	16-20	104.3	13.9	18.2	19.6	20.2	10.0	14.2	15.0	16.7
4199-2016	20-16	104.7	9.8	13.8	15.2	15.8	14.0	18.3	19.1	20.7
4199-2020	20-20	106.0	13.9	18.2	19.6	20.2	14.0	18.3	19.1	20.7
4199-2516	25-16	106.8	9.8	13.8	15.2	15.8	18.3	23.1	23.9	25.7
4199-2520	25-20	108.1	13.9	18.2	19.6	20.2	18.3	23.1	23.9	25.7

LM	LC	H
49.6	40.0	49.0

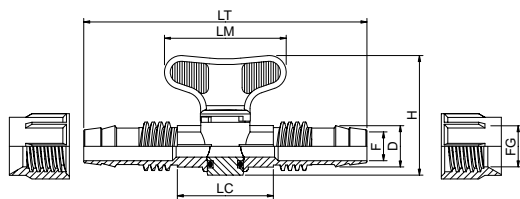
4200



CODE	Ø	LT	F	D1	DA	D2	LF	DF	DE	LV
4200.0160	16-D	99.2	9.8	13.8	15.2	15.8	20.0	3/8"	24.3	49.6
4200.0200	20-D	100.5	13.9	18.2	19.6	20.2	20.0	3/8"	24.3	49.6

LM	LC	H
49.6	40.0	49.0

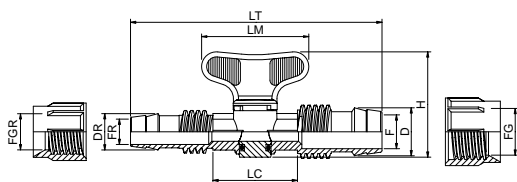
4210



CODE	Ø	LT	F	D	FG
4210.0170	17-17	116.8	11.8	16.9	16.6
4210.0220	22-22	118.8	15.9	22.3	22.0

LM	LC	H
49.6	40.0	49.0

4215



CODE	Ø	LT	F	D	FG	FR	DR	FGR
4215.2217	22-17	117.8	15.9	22.3	22.0	11.8	16.9	16.6

LM	LC	H
49.6	40.0	49.0

Valvole a cilindro "Jolly"

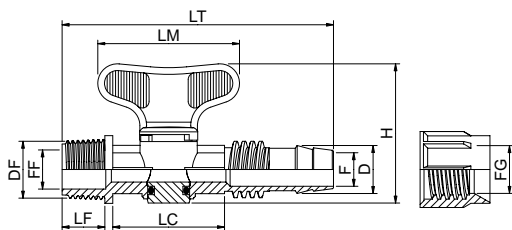
2 o-rings, foro di passaggio Ø9 mm

"Jolly" cylinder valves
2 o-rings, Ø9 mm passage hole



4220

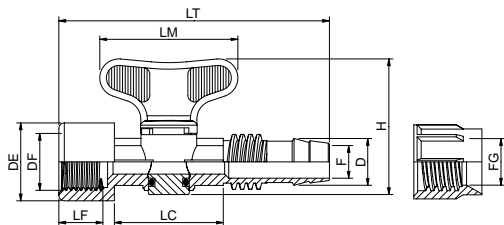
CODE	Ø	LT	F	D	FG	LF	FF	DF
4220.017C	17-1/2"	96.1	11.8	16.9	16.6	15.3	14.0	1/2"
4220.017D	17-3/4"	98.1	11.8	16.9	16.6	17.3	18.3	3/4"
4220.022C	22-1/2"	97.1	15.9	22.3	22.0	15.3	14.0	1/2"
4220.022D	22-3/4"	99.1	15.9	22.3	22.0	17.3	18.3	3/4"



LM	LC	H
49.6	40.0	49.0

4225

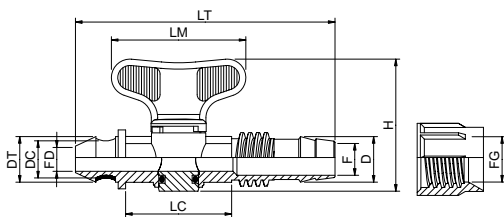
CODE	Ø	LT	F	D	FG	LF	DF	DE
4225.017C	17-1/2"	98.4	11.8	16.9	16.6	18.0	1/2"	31.3
4225.017D	17-3/4"	100.4	11.8	16.9	16.6	20.0	3/4"	37.2
4225.022C	22-1/2"	99.4	15.9	22.3	22.0	18.0	1/2"	31.3
4225.022D	22-3/4"	101.4	15.9	22.3	22.0	20.0	3/4"	37.2



LM	LC	H
49.6	40.0	49.0

4235

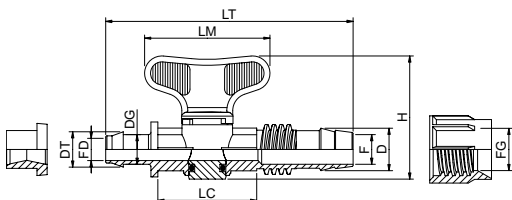
CODE	Ø	LT	F	D	FG	FD	DC	DT
4235.0170	17-D	96.9	11.8	16.9	16.6	8.9	14.0	16.8
4235.0220	22-D	97.9	15.9	22.3	22.0	8.9	14.0	16.8



LM	LC	H
49.6	40.0	49.0

4244

CODE	Ø	LT	F	D	FG	DG	FD	DT
4244.0170	17-D	99.1	11.8	16.9	16.6	11.8	8.9	14.0
4244.0220	22-D	100.1	15.9	22.3	22.0	11.8	8.9	14.0



LM	LC	H
49.6	40.0	49.0

Valvole a cilindro "Jolly"

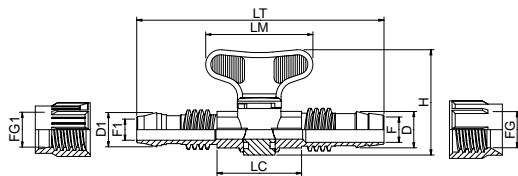
2 o-rings, foro di passaggio Ø9 mm

"Jolly" cylinder valves

2 o-rings, Ø9 mm passage hole



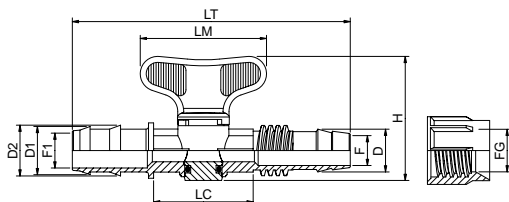
4247



CODE	Ø	LT	F	D	FG	F1	D1	FG1
4247.1617	16-17	115.8	11.8	16.9	16.6	9.9	16.0	16.3
4247.1817	18-17	115.8	11.8	16.9	16.6	11.8	18.0	18.3
4247.2017	20-17	115.8	11.8	16.9	16.6	14.0	20.0	21.0
4247.2217	22-17	116.3	11.8	16.9	16.6	17.6	23.5	24.3
4247.1622	16-22	116.8	15.9	22.3	22.0	9.9	16.0	16.3
4247.1822	18-22	116.8	15.9	22.3	22.0	11.8	18.0	18.3
4247.2022	20-22	116.8	15.9	22.3	22.0	14.0	20.0	21.0
4247.2222	22-22	117.3	15.9	22.3	22.0	17.6	23.5	24.3

LM	LC	H
49.6	40.0	49.0

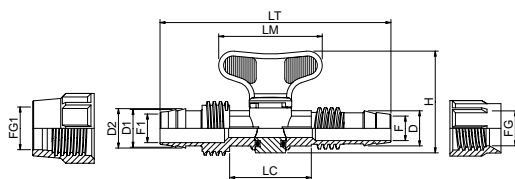
4248



CODE	Ø	LT	F	D	FG	F1	D1	D2
4248.1617	16-17	108.0	11.8	16.9	16.6	9.8	14.8	15.6
4248.1622	16-22	109.0	15.9	22.3	22.0	9.8	14.8	15.6
4248.2017	20-17	108.4	11.8	16.9	16.6	13.9	19.0	20.0
4248.2022	20-22	109.4	15.9	22.3	22.0	13.9	19.0	20.0
4248.2517	25-17	115.4	11.8	16.9	16.6	18.2	24.0	25.0
4248.2522	25-22	116.4	15.9	22.3	22.0	18.2	24.0	25.0

LM	LC	H
49.6	40.0	49.0

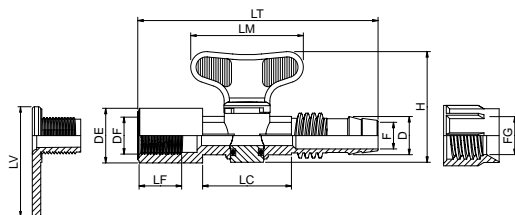
4249



CODE	Ø	LT	F	D	FG	F1	D1	D2	FG1
4249.1617	16-17	110.6	11.8	16.9	16.6	10.0	14.2	15.0	16.7
4249.1622	16-22	111.6	15.9	22.3	22.0	10.0	14.2	15.0	16.7
4249.2017	20-17	112.2	11.8	16.9	16.6	14.0	18.3	19.1	20.7
4249.2022	20-22	113.2	15.9	22.3	22.0	14.0	18.3	19.1	20.7
4249.2517	25-17	114.4	11.8	16.9	16.6	18.3	23.1	23.9	25.7
4249.2522	25-22	115.4	15.9	22.3	22.0	18.3	23.1	23.9	25.7

LM	LC	H
49.6	40.0	49.0

4250



CODE	Ø	LT	F	D	FG	LF	DF	DE	LV
4250.0170	17-D	106.8	11.8	16.9	16.6	20.0	3/8"	24.3	49.6
4250.0220	22-D	107.8	15.9	22.3	22.0	20.0	3/8"	24.3	49.6

LM	LC	H
49.6	40.0	49.0

Valvole a cilindro "Jolly"

2 o-rings, foro di passaggio Ø9 mm

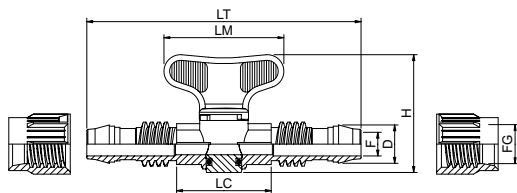
"Jolly" cylinder valves

2 o-rings, Ø9 mm passage hole



4260

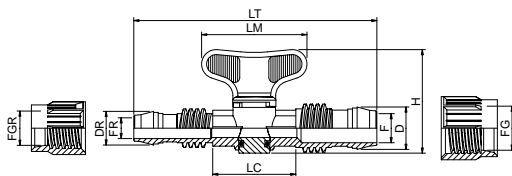
CODE	Ø	LT	F	D	FG
4260.0160	16-16	114.8	9.9	16.0	16.3
4260.0180	18-18	114.8	11.8	18.0	18.3
4260.0200	20-20	114.8	14.0	20.0	21.0
4260.0220	22-22	115.8	17.6	23.5	24.3



LM	LC	H
49.6	40.0	49.0

4265

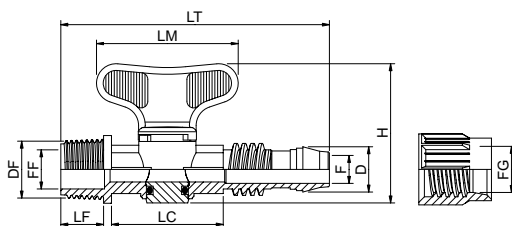
CODE	Ø	LT	F	D	FG	FR	DR	FGR
4265.1816	18-16	114.8	11.8	18.0	18.3	9.9	16.0	16.3
4265.2016	20-16	114.8	14.0	20.0	21.0	9.9	16.0	16.3
4265.2018	20-18	114.8	14.0	20.0	21.0	11.8	18.0	18.3
4265.2216	22-16	115.3	17.6	23.5	24.3	9.9	16.0	16.3
4265.2218	22-18	115.3	17.6	23.5	24.3	11.8	18.0	18.3
4265.2220	22-20	115.3	17.6	23.5	24.3	14.0	20.0	21.0



LM	LC	H
49.6	40.0	49.0

4270

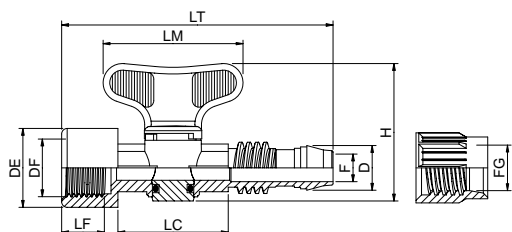
CODE	Ø	LT	F	D	FG	LF	FF	DF
4270.016C	16-½"	95.1	9.9	16.0	16.3	15.3	14.0	½"
4270.016D	16-¾"	97.1	9.9	16.0	16.3	17.3	18.3	¾"
4270.018C	18-½"	95.1	11.8	18.0	18.3	15.3	14.0	½"
4270.018D	18-¾"	97.1	11.8	18.0	18.3	17.3	18.3	¾"
4270.020C	20-½"	95.1	14.0	20.0	21.0	15.3	14.0	½"
4270.020D	20-¾"	97.1	14.0	20.0	21.0	17.3	18.3	¾"
4270.022C	22-½"	95.6	17.6	23.5	24.3	15.3	14.0	½"
4270.022D	22-¾"	97.6	17.6	23.5	24.3	17.3	18.3	¾"



LM	LC	H
49.6	40.0	49.0

4275

CODE	Ø	LT	F	D	FG	LF	DF	DE
4275.016C	16-½"	97.4	9.9	16.0	16.3	18.0	½"	31.3
4275.016D	16-¾"	99.0	9.9	16.0	16.3	20.0	¾"	37.2
4275.018C	18-½"	97.4	11.8	18.0	18.3	18.0	½"	31.3
4275.018D	18-¾"	99.0	11.8	18.0	18.3	20.0	¾"	37.2
4275.020C	20-½"	97.4	14.0	20.0	21.0	18.0	½"	31.3
4275.020D	20-¾"	99.0	14.0	20.0	21.0	20.0	¾"	37.2
4275.022C	22-½"	97.9	17.6	23.5	24.3	18.0	½"	31.3
4275.022D	22-¾"	99.5	17.6	23.5	24.3	20.0	¾"	37.2



LM	LC	H
49.6	40.0	49.0

Valvole a cilindro "Jolly"

2 o-rings, foro di passaggio Ø9 mm

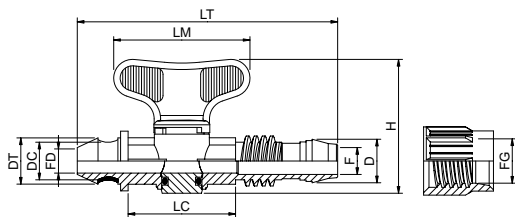
"Jolly" cylinder valves

2 o-rings, Ø9 mm passage hole



4285

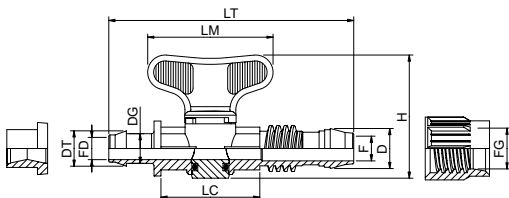
CODE	Ø	LT	F	D	FG	FD	DC	DT
4285.0160	16-D	95.9	9.9	16.0	16.3	8.9	14.0	16.8
4285.0180	18-D	95.9	11.8	18.0	18.3	8.9	14.0	16.8
4285.0200	20-D	95.9	14.0	20.0	21.0	8.9	14.0	16.8
4285.0220	22-D	96.4	17.6	23.5	24.3	8.9	14.0	16.8



LM	LC	H
49.6	40.0	49.0

4294

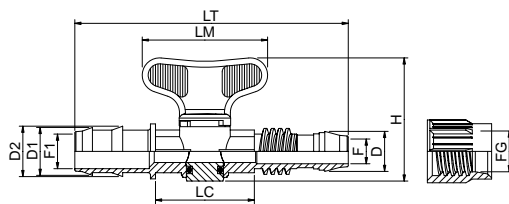
CODE	Ø	LT	F	D	FG	DG	FD	DT
4294.0160	16-D	98.1	9.9	16.0	16.3	11.8	8.9	14.0
4294.0180	18-D	98.1	11.8	18.0	18.3	11.8	8.9	14.0
4294.0200	20-D	98.1	14.0	20.0	21.0	11.8	8.9	14.0
4294.0220	22-D	98.6	17.6	23.5	24.3	11.8	8.9	14.0



LM	LC	H
49.6	40.0	49.0

4298

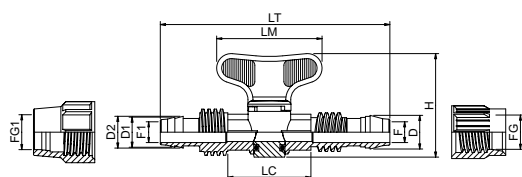
CODE	Ø	LT	F	D	FG	F1	D1	D2
4298.1616	16-16	107.0	9.9	16.0	16.3	9.8	14.8	15.6
4298.1618	16-18	107.0	11.8	18.0	18.3	9.8	14.8	15.6
4298.1620	16-20	107.0	14.0	20.0	21.0	9.8	14.8	15.6
4298.1622	16-22	107.5	17.6	23.5	24.3	9.8	14.8	15.6
4298.2016	20-16	107.3	9.9	16.0	16.3	13.9	19.0	20.0
4298.2018	20-18	107.3	11.8	18.0	18.3	13.9	19.0	20.0
4298.2020	20-20	107.3	14.0	20.0	21.0	13.9	19.0	20.0
4298.2022	20-22	107.8	17.6	23.5	24.3	13.9	19.0	20.0
4298.2516	25-16	114.4	9.9	16.0	16.3	18.2	24.0	25.0
4298.2518	25-18	114.4	11.8	18.0	18.3	18.2	24.0	25.0
4298.2520	25-20	114.4	14.0	20.0	21.0	18.2	24.0	25.0
4298.2522	25-22	114.9	17.6	23.5	24.3	18.2	24.0	25.0



LM	LC	H
49.6	40.0	49.0

4299

CODE	Ø	LT	F	D	FG	F1	D1	D2	FG1
4299.1616	16-16	109.6	9.9	16.0	16.3	10.0	14.2	15.0	16.7
4299.1618	16-18	109.6	11.8	18.0	18.3	10.0	14.2	15.0	16.7
4299.1620	16-20	109.6	14.0	20.0	21.0	10.0	14.2	15.0	16.7
4299.1622	16-22	110.1	17.6	23.5	24.3	10.0	14.2	15.0	16.7
4299.2016	20-16	111.3	9.9	16.0	16.3	14.0	18.3	19.1	20.7
4299.2018	20-18	111.3	11.8	18.0	18.3	14.0	18.3	19.1	20.7
4299.2020	20-20	111.3	14.0	20.0	21.0	14.0	18.3	19.1	20.7
4299.2022	20-22	111.8	17.6	23.5	24.3	14.0	18.3	19.1	20.7
4299.2516	25-16	113.4	9.9	16.0	16.3	18.3	23.1	23.9	25.7
4299.2518	25-18	113.4	11.8	18.0	18.3	18.3	23.1	23.9	25.7
4299.2520	25-20	113.4	14.0	20.0	21.0	18.3	23.1	23.9	25.7
4299.2522	25-22	113.9	17.6	23.5	24.3	18.3	23.1	23.9	25.7



LM	LC	H
49.6	40.0	49.0

Valvole a cilindro "Jolly"

2 o-rings, foro di passaggio Ø9 mm

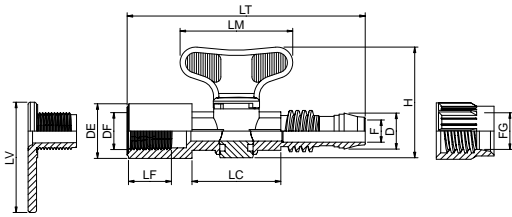
"Jolly" cylinder valves

2 o-rings, Ø9 mm passage hole



4300

CODE	Ø	LT	F	D	FG	LF	DF	DE	LV
4300.0160	16-D	105.8	9.9	16.0	16.3	20.0	3/8"	24.3	49.6
4300.0180	18-D	105.8	11.8	18.0	18.3	20.0	3/8"	24.3	49.6
4300.0200	20-D	105.8	14.0	20.0	21.0	20.0	3/8"	24.3	49.6
4300.0220	22-D	106.3	17.6	23.5	24.3	20.0	3/8"	24.3	49.6



LM	LC	H
49.6	40.0	49.0